



2706 Bouldercrest Road
Atlanta, GA 30016

Call 404.241.7671



Sugar Creek Golf & Tennis Center Improvements



LIQUID DESIGN STUDIOS, LLC

LIQUID DESIGN STUDIOS, LLC

- A DeKalb County firm, established in 2001, and certified by the County as an LSBE, MBE and WBE firm
- We specialize and focus on retail and hospitality projects



Our Consultants



- Greg Ferguson & Associates
 - Atlanta-based engineering firm for 20 years
 - Has worked with Liquid Design for the last 5 years
 - Knowledgeable of systems design, budget control and life cycle costing

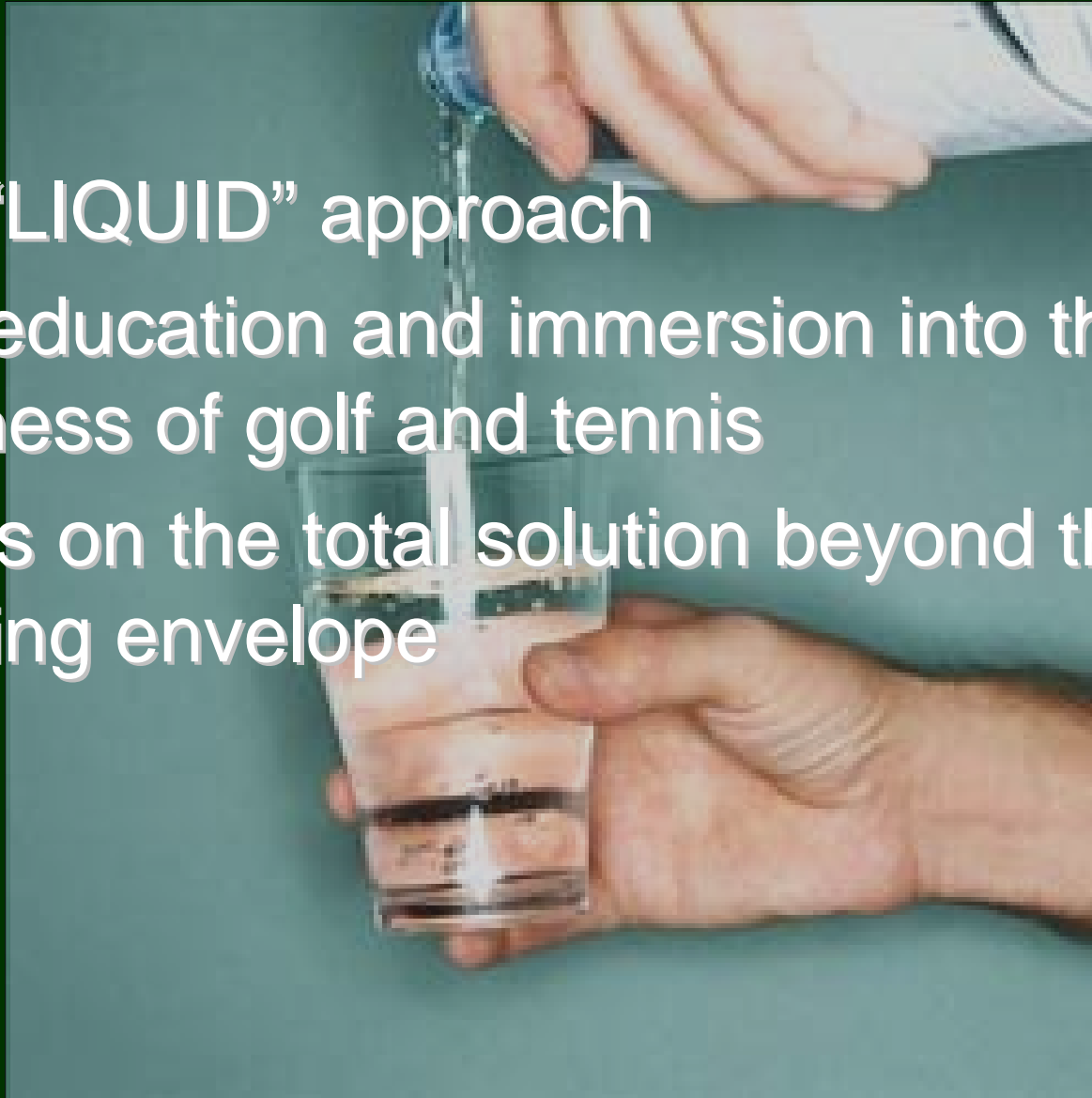


- Equilibria, Inc.
 - Atlanta-based office organization firm specializing in workspace logistics
 - Certified by DeKalb County as an LSBE - MSA
 - Has worked to reorganize the DeKalb County District Attorney's office as well as many other businesses



Management Approach

- The “LIQUID” approach
- Self-education and immersion into the business of golf and tennis
- Focus on the total solution beyond the building envelope



Client List/Projects

• Restaurants

- Bruster's Real Ice Cream (6 stores)
- Lillian's Sit N Sip
- Coffee Loft
- Diggety's Restaurant
- Smilin' Dawg BBQ
- A La Mode Dessert Bar
- CUPS Coffee and Wine Bar
- Original Steak & Take
- Frisson Restaurant
- Dog Days Deli

Retail

- Academy of Beauty Science and Salon
- Mane Event International Hair Studio
- Sonny's Car Wash Equipment (3 stores)
- Howco Car Wash Equipment (2 stores)
- Shoppes of Stockbridge (5 projects)
- Wilder Structures, Inc. (13 projects)
- Metro Salon Studios
- Mane Priority Salon
- Spalding Florist
- Peachtree Plaza

• Hospitality

- Royal Palm Event Center
- Days Inn
- Best Western

Design Issues

- Structural
- Architectural
- Mechanical
- Electrical
- Plumbing



Structural

- Base building safety
- Exterior Decks
- Foundations
- Superstructure



Architectural

- Identity
- Storage
- Retail
- Administrative
- Concessions
- Lounging



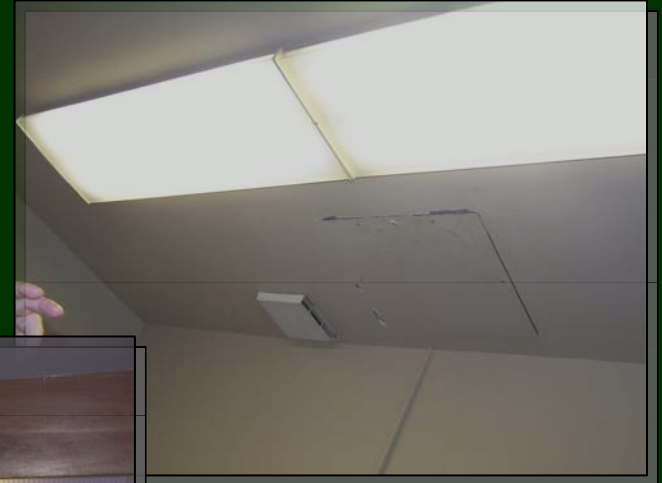
Mechanical

- Zones and Systems
- Comfort
- Humidity Control
- Efficiency
- System Access



Electrical

- Power Access
- Lighting
- Equipment



Plumbing

- Potable Water
- Sanitary Systems
- Updated Equipment
- Efficient fixtures

